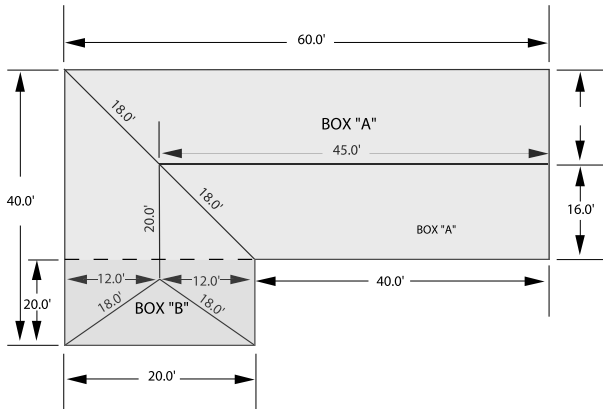


# ESTIMATING MEDITERRANEAN TILES



## Five and Two Step Tile Panel Coverage Table

	Rafter Length	
	Five Step Panels	Two Step Panel
One Panel	6 ft. 3"	One Panel 2 ft. 6"
Two Panels	12 ft. 6"	Two Panels 5 ft.
Three Panels	18 ft. 9"	
Four Panels	25ft.	
Five Panels	31ft. 3"	

The majority of the roof will be done using five step panels, two step panels are provided for hips, valleys and at the ridge to keep the waste at a minimum.

- 1) Begin by blocking off the roof as in our example.
- 2) Measure the width of the roof and divide by 1.5 (18")  
*\*\*Note: Round up to the next full tile. This will give you the number of tiles horizontally.*
- 3) Measure the rafter length using the table above, determine the number of five step and two step panels needed vertically to the ridge.
- 4) Multiply the number of five step vertical panels by the number of horizontal panels to learn the total number of five step panels. Repeat the same procedure to determine the total number of two step panels of the roof within the block.  
*\*\*Note: If the rafter and length of the roof are the same on the other side within the block, multiply by 2. If not, repeat the above procedure.*
- 5) Repeat the procedure until all blocks have been measured.
- 6) Add together the linear feet of all hips and valleys. Multiply the linear feet by .9 this will give you the number of waste "two step" panels.
- 7) All that remains is to add the number of five step panels in each block, and the number of two step panels, plus the number of waste two step tiles. This will give you the total number of tile panels needed including waste.

## SHORT FORM ESTIMATING FOR MEDITERRANEAN TILE.

### Quick method for Salesman:

- 1) Determine the square footage without waste. (2400 s/ft.)
- 2) Add the linear feet of hips and valleys and multiply by 2. (144 s/ft.)
- 3) Add totals of #1 and #2. (2544 s/ft.)
- 4) Now multiply the total by 1.15, this yields the square footage including waste. (2,926 s/ft.)
- 5) Divide the square footage by 100 showing that 29.26 sqs. of Mediterranean Tile panels are needed.

## Estimating the above diagram using the Future Roof Mediterranean tile panels:

### Box (A)

- 1) The rafter length 16 ft., the above chart indicates that two "five step" panels will allow us to go 12 ft. 6" vertically. Leaving us with 3 ft. 6". Checking the above chart we find that two "two step" panels will be needed.
- 2) The width is 60 ft. divided 1.5 (18") = 40 horizontal tile panels.
- 3) 2 (five step) X 40 = 80 X 2 (both sides are the same) = 160 "five step" tile panels.
- 4) 2 (two step) X 40 = 80 X 2 (both sides are the same) = 160 "two step" tile panels.

### Box (B)

- 1) The rafter length 12 ft., the above chart indicates that two "five step" tile panels are needed vertically.
- 2) No "two step" tile panels are needed.
- 3) The width is 20 ft. divided 1.5 = 13.3 round up to 14 tile panels wide.
- 4) 2 (five step) X 14 = 28 X 2 (both sides are the same) = 56 "five step" tile panels.

### Waste:

Linear feet of Hips and Valley's = 72 X .9 = 64.8 or 65 "two step" tile panels of waste.

### Add Box (A) & (B):

- (A) 160 + (B) 56 = 216 "five-step" tile panels. At 10.7 pcs. per square = 20.19 squares  
 (A) 160 "two step" tile panels, plus 65 tiles waste = 225 "two step" tile panels. At 26.7 pcs. per square = 8.43 squares

## Total Squares of Mediterranean Tile 28.62 sqs.

### Order

- 216 "five step" tile panels.  
 225 "two step" tile panels.

## Estimating hip and ridge trim pieces:

Measure the linear feet of Hips, and Ridge.

151 linear ft. Divide by 3.75 = 40.27 plus 10% = 44.74 or 45 pcs. of "Hip and Ridge Trim".